

# LEPUS - I

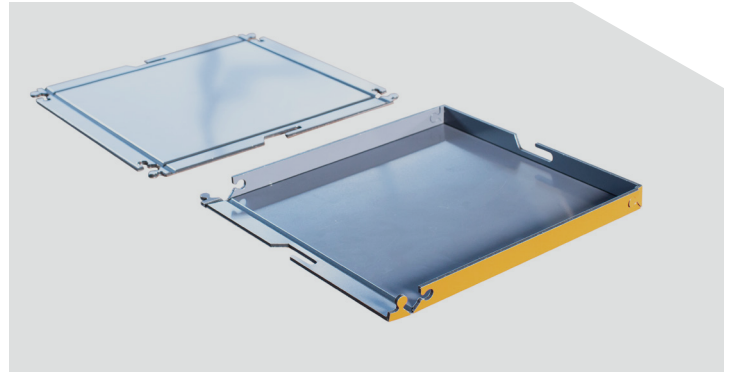
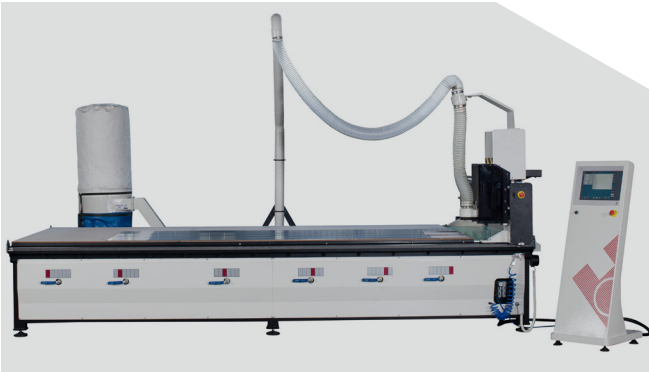
CNC Controlled Aluminum Composite Panel Processing Machine (3 Axis)



ALU



**The 3-Axis CNC controlled panel processing machine LEPUS - I is intended for cutting, v-channel opening and similar operations on various composite panels and plates. In addition, the machine enables processing of wooden, plastic and various materials by replacement of the milling cutter.**



### FEATURES

- » Composite plate fixing and superior processing quality with strong vacuum
- » CNC based control system
- » Vacuuming in independent sections
- » Processing wooden and plastic plates by replacement of milling cutter
- » 2D CAD CAM graphics and optimization software
- » Ideal vacuuming with air channels on polyethylene board
- » Remote network connection, data transfer over Ethernet and USB
- » Diagnostics and easy troubleshooting with remote access
- » Automatic milling cutter length reset
- » External dust vacuuming system
- » Touchscreen
- » Protection against sawdust in working area with proprietary dust absorption system
- » Long lasting electro-static paint
- » Steel frame with tension resistance, high accuracy processing
- » Long service life with low mechanical cavity
- » Special vacuum circuit designed for local vacuum delivery
- » Special automatic alignment system which enables easy material reset
- » Automatic alignment system
- » Pneumatic system maintenance unit

### OPERATIONAL EQUIPMENT

- |  |   |
|--|---|
| » Air-cooled spindle (2 pcs)                         | • |
| » Polyethylene board with channels                   | • |
| » Safety shield for polyethylene board with channels | • |
| » Local vacuum                                       | • |
| » Automatic vacuuming system                         | • |
| » External dust vacuuming system                     | • |
| » Tactile tool reset on Z axis                       | • |
| » Automatic alignment system                         | • |
| » USB port   | • |
| » 2D - 3D CAD CAM graphics and optimization program  | • |
| » Cutters (4 pcs)                                    | • |
| » Vacuum pump (700m <sup>3</sup> /h)                 | • |
| » FRL  | • |
| » Special cutter tools                               | ○ |
| » Optional length                                    | ○ |

○ Optional

• Included

1000 m<sup>2</sup>

# LEPUS - I

CNC Controlled Aluminum Composite Panel Processing Machine (3 Axis)



ALU

## AXIAL DISTANCES

X AXIS (Longitudinal)	1860 mm
Y AXIS (Lateral)	4000 mm
Z AXIS (Vertical)	110 mm

## POSITIONING SPEED

X Axis (Longitudinal)	120 m/min
Y Axis (Lateral)	120 m/min
Z Axis (Vertical)	30 m/min

## SPINDLE

Max. Rotation Speed	24000rpm
Power	3.2kW
Cooling Type	Air

## AIR

Pressure	6-8 bar
----------	---------

## ELECTRICAL

Power	16kVA
Voltage	400V 3~
Frequency	50-60Hz

## DIMENSIONS

Length	±4000 mm
Width	±2400 mm
Height	±2100 mm
Weight	±1600 kg

